

Landscape Maintenance Districts

LLAD No. 2, Zone 35 - Montebello





LLAD District No. 2, Zone 35 - Montebello

Summary of October 29, 2015 Meeting Options Presented

LARGE SHADE TREES



Jacaranda
Jacaranda mimosifolia



Chinese Elm
Ulmus parvifolia



Coast Live Oak
Quercus agrifolia



Brisbane Box
Lophostemon confertus

MEDIUM ACCENT TREES



Desert Museum Palo Verde
Cercidium x 'Desert Museum'



Pink Dawn Chitalpa
x Chitalpa 'Pink Dawn'

LMD ZONE 35 - MONTEBELLO

PROPOSED TREES






POCKET PARK/PASSIVE RECREATION






COMMUNITY GARDEN






GREEN STREET/WATER QUALITY

LMD ZONE 35 - MONTEBELLO

PROPOSED USES

- Tree/Landscape Replanting
- Community Gardens
- Walking/Jogging Paths
- Pocket Parks/Passive Recreation
- Green Street/Water Quality Control

Summary of October 29, 2015 Meeting

Survey Results

Total received: 30

Ratings (5 is highest)

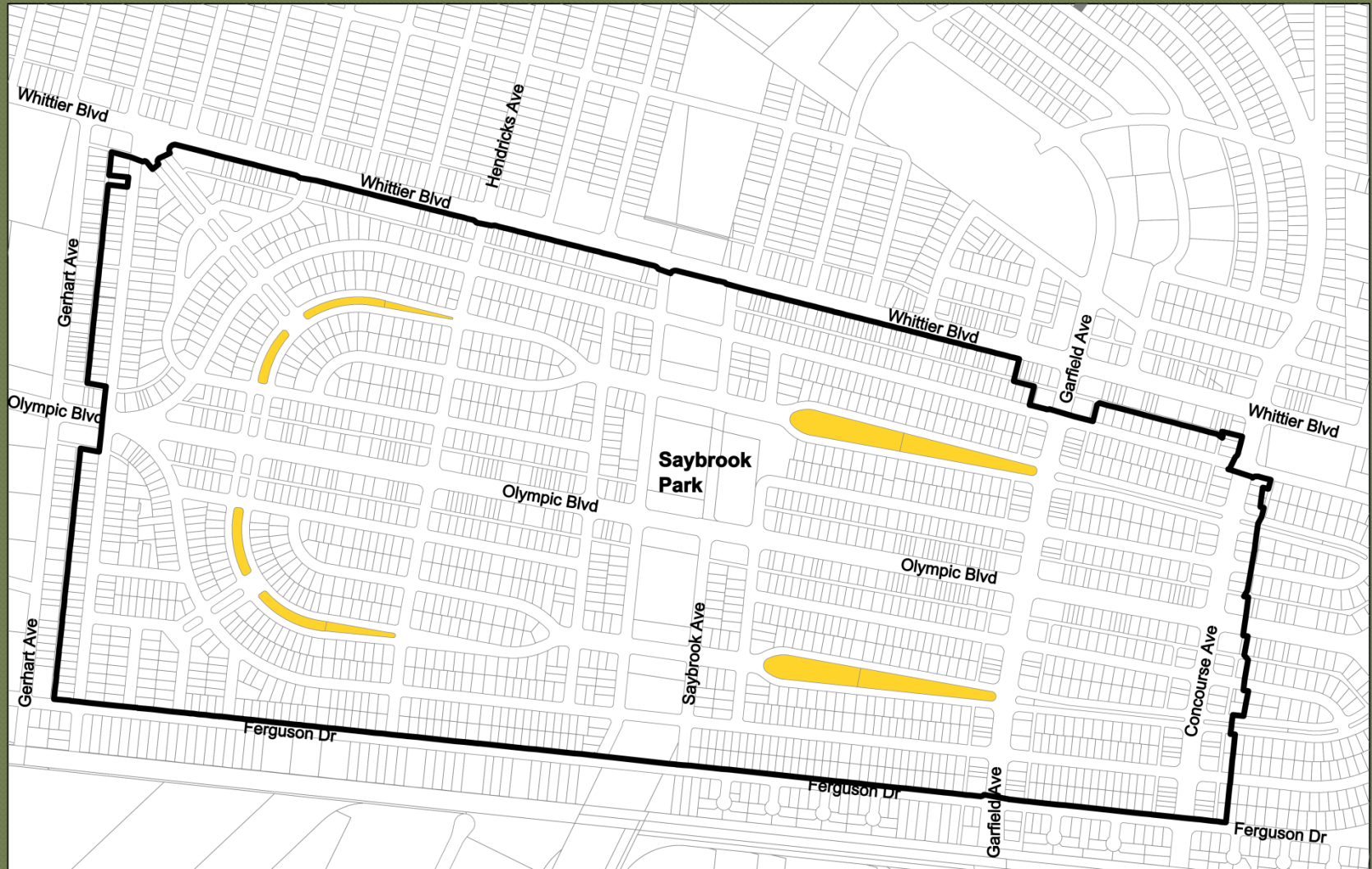
<u>Option</u>	<u>Avg. Rating</u>
Trees:	4.63
Community Gardens:	2.74
Walking/Jogging Paths:	3.90
Pocket Parks/Passive Recreation:	2.96
Green Street/Water Quality Control:	3.74

Replanting Trees/Landscaping Candidate Project Areas

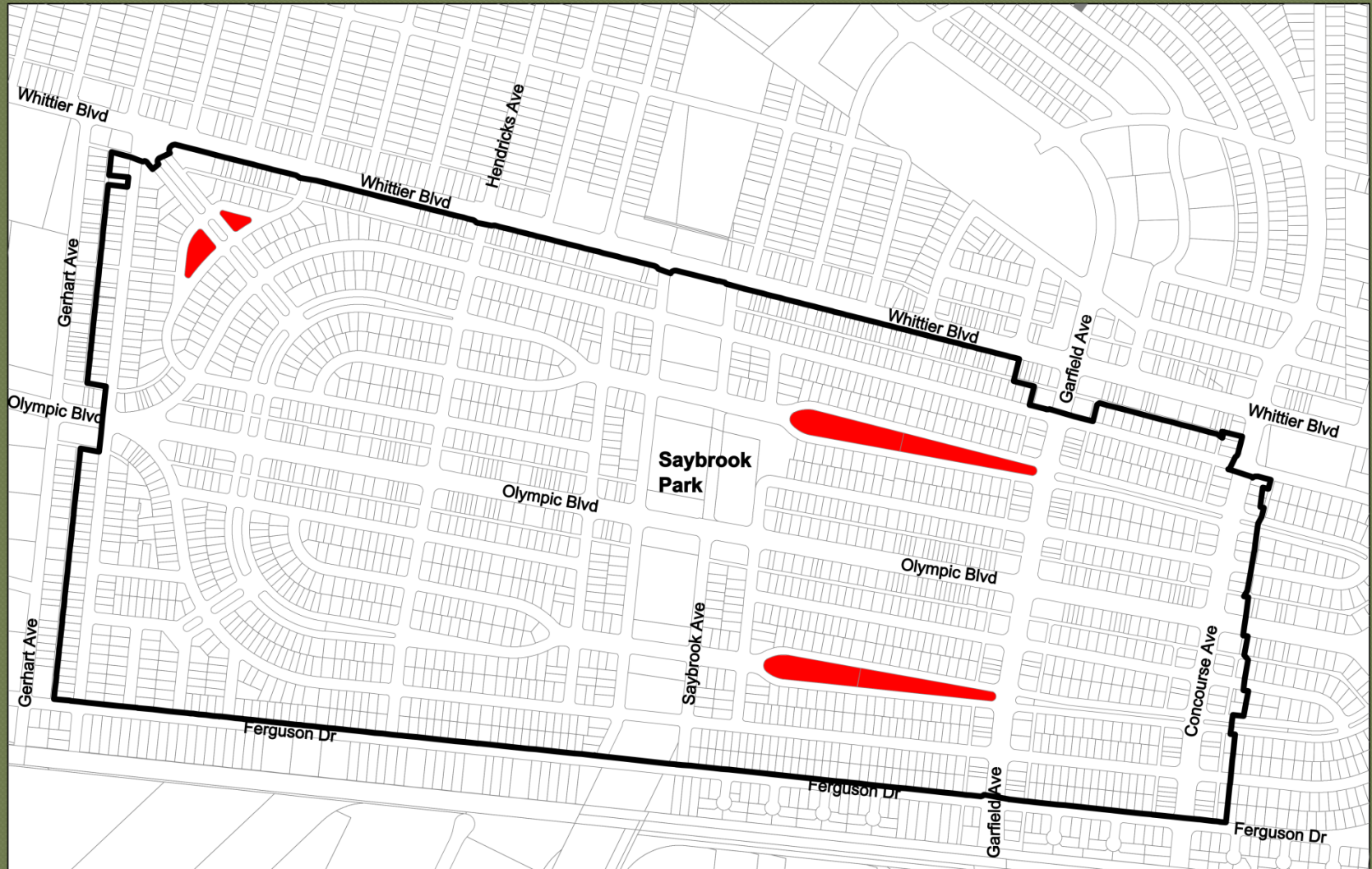


Walking/Jogging Paths

Candidate Project Areas



Green Streets/Water Quality Control Candidate Project Areas



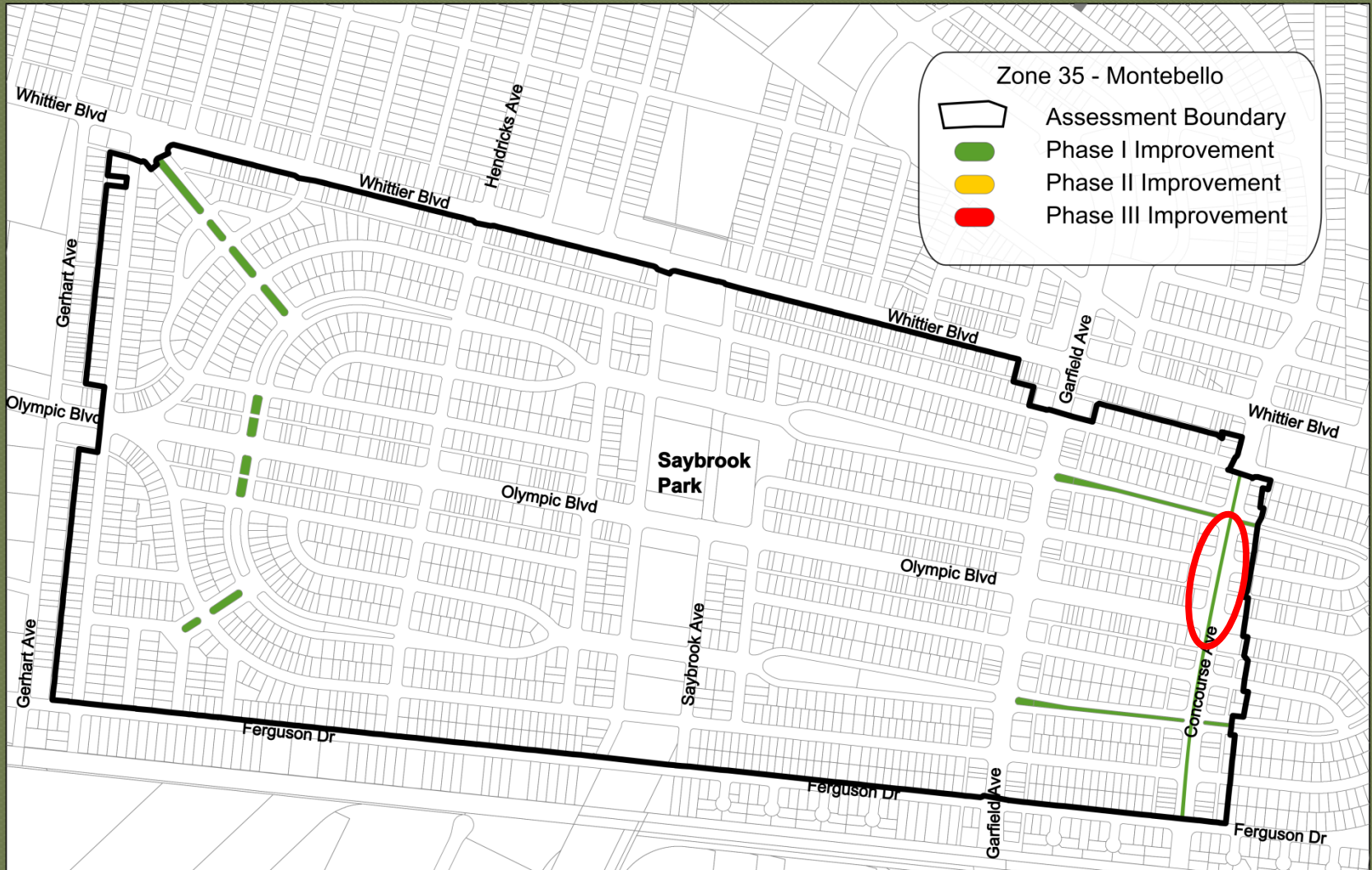
Combined Work Phasing Plan

Candidate Project Areas



Phase I Improvements

Trees/Landscaping and Bio-swales (where feasible)



Phase I Improvements

Trees/Landscaping and Bio-swales (where feasible)

Design Features

Option 1

- Non-turf ground cover
- Drought-tolerant shrubs and bushes
- Tree enhancements
- Water-efficient irrigation

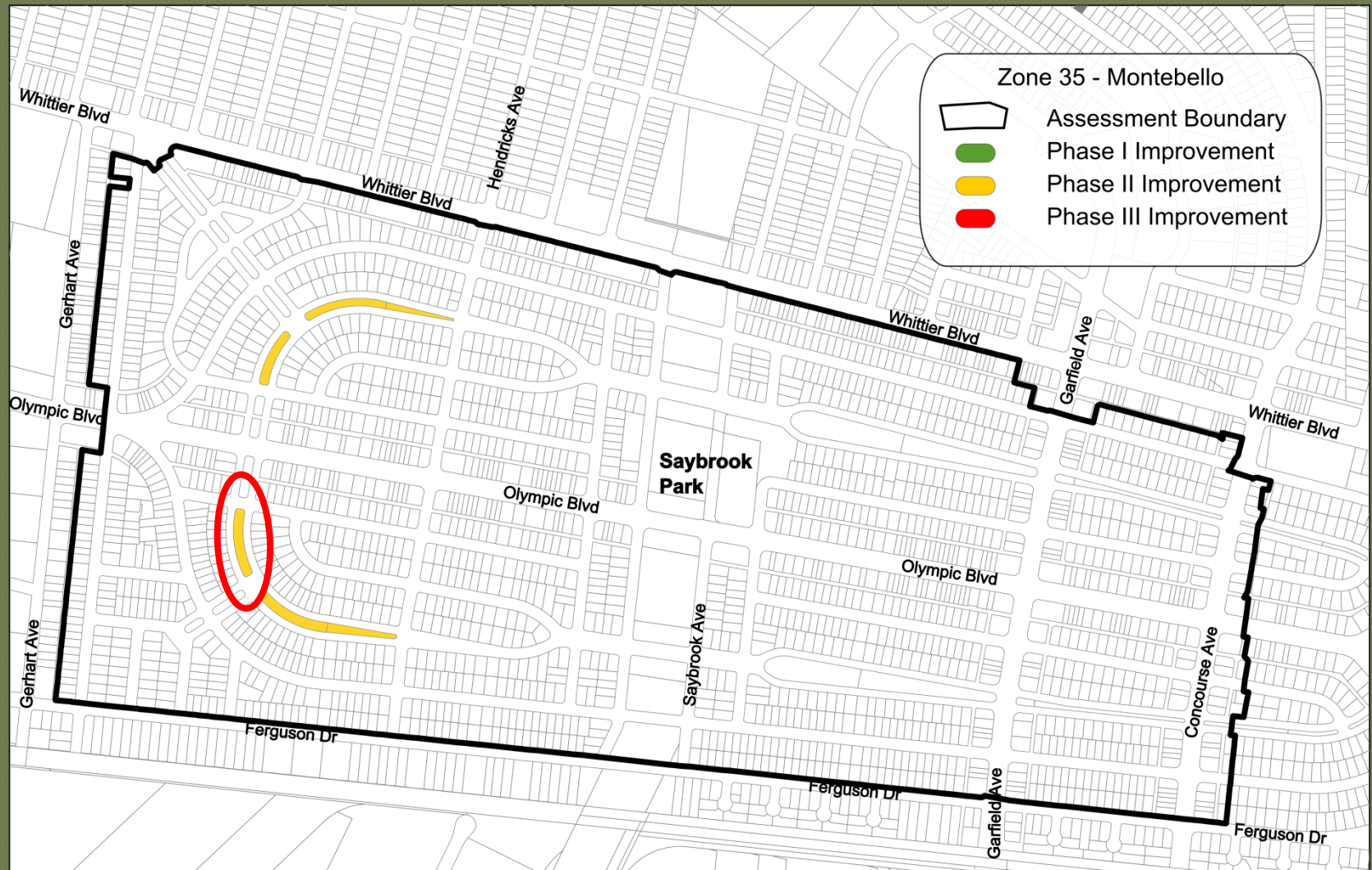
Option 2 (pending study results)

- All the features in Option 1
- Bio-swales



Phase II Improvements

Walking/Jogging Paths and Infiltration Devices (where feasible)



Phase II Improvements

Walking/Jogging Paths and Infiltration Devices (where feasible)



Design Features

Option 1

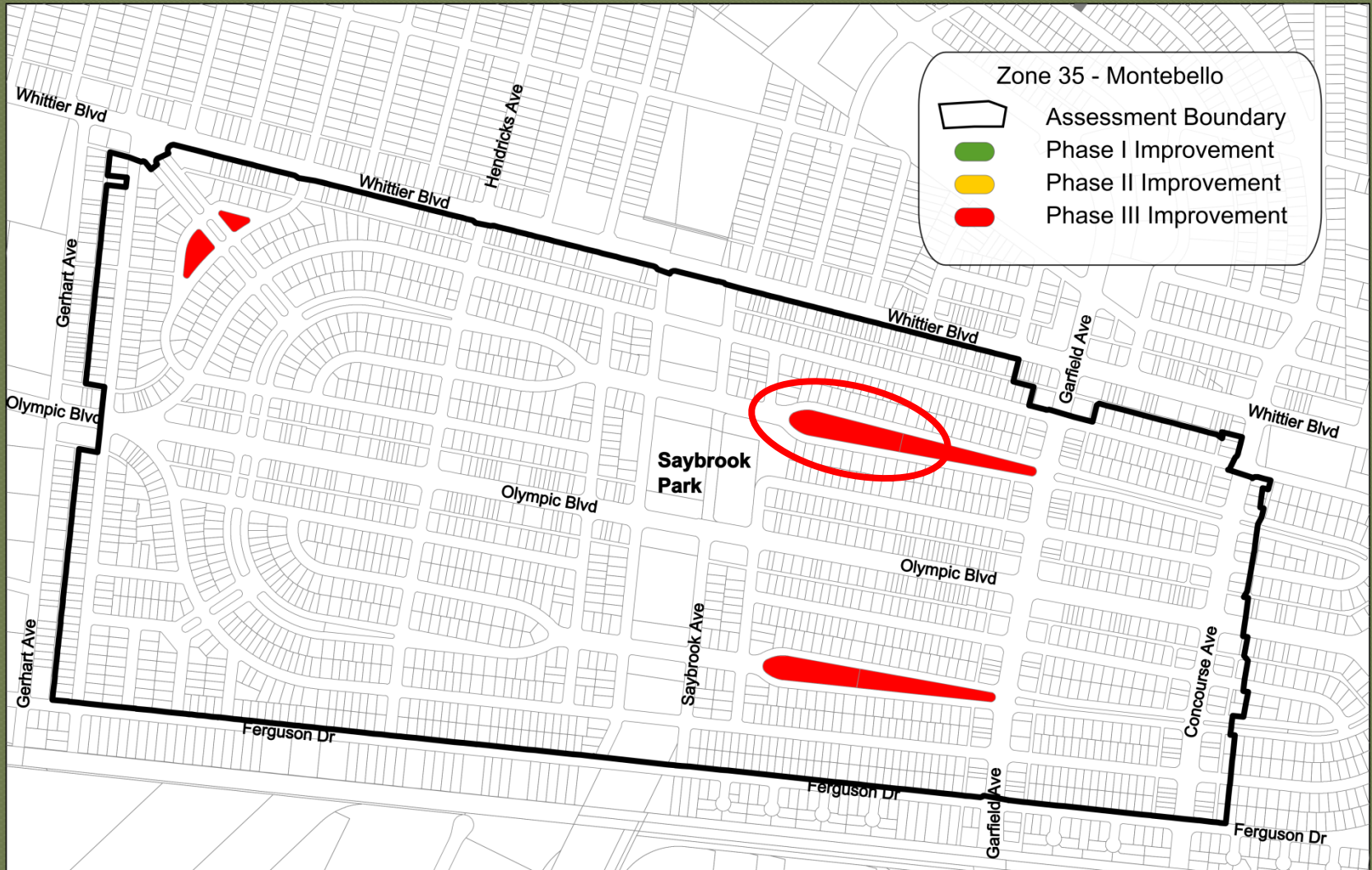
- All the features of Phase I
- Walking paths
- Benches
- Educational Stations

Option 2 (pending study results)

- All the features in Option 1
- Subsurface infiltration systems

Phase III Improvements

Green Streets/Water Quality Control



Phase III Improvements

Green Streets/Water Quality Control



Design Features

Option 1

- All the features of Phase II

Option 2 (pending study results)

- All the features in Option 1
- Stormwater Capture Modules

Phase I Schedule

Trees/Landscaping and Bio-swales (where feasible)

February 2016

- Complete Preliminary Studies and Conceptual Plans



March 2016

- Present Conceptual Plans to the Community



April 2016

- Select Conceptual Plans



June 2016

- Complete Design Plans



July 2016

- Present Design Plans to the community



October 2016

- Start Construction



Phase II Schedule

Walking/Jogging Paths and Infiltration Devices (where feasible)

February 2016

- Complete Preliminary Studies and Conceptual Plans



March 2016

- Present Conceptual Plans to the Community



April 2016

- Select Conceptual Plans



July 2016

- Present Design Selection to the Community

Option 1



September 2016

- Complete Design Plans



October 2017

- Start Construction

Option 2
(Water Quality Control Features)



Approx. 1.5 to 2 years

- Complete Design Plans



Approx. 8 months later

- Start Construction

Phase III Schedule

Green Streets/Water Quality Control

February 2016

- Complete Preliminary Studies and Conceptual Plans



March 2016

- Present Conceptual Plans to the Community



April 2016

- Select Conceptual Plans



July 2016

- Present Design Selection to the Community

Option 1



December 2016

- Complete Design Plans



October 2017

- Start Construction

Option 2
(Water Quality Control Features)



Approx. 2 to 2.5 years

- Complete Design Plans



Approx. 8 months later

- Start Construction

Next Steps

February 2016

- Complete Preliminary Studies and Conceptual Plans



March 2016

- Present Conceptual Plans to the Community



April 2016

- Select Conceptual Plans

Contact:

Julian Garcia

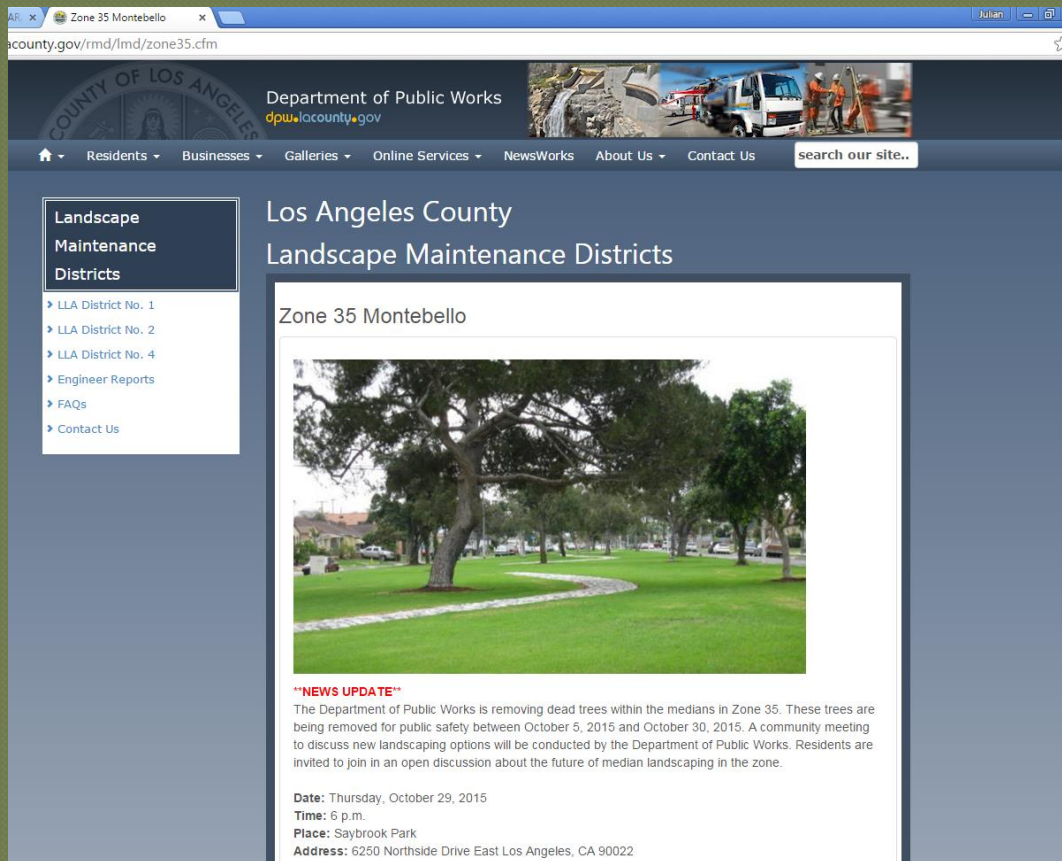
Landscape Maintenance Districts
Traffic and Lighting Division
Transportation Branch
Department of Public Works

(626) 300-2061

jugarcia@dpw.lacounty.gov

LLAD No 2, Zone 35 – Montebello East Los Angeles


- For more information on this Zone, please visit our website:
<http://dpw.lacounty.gov/rmd/lmd/zone35.cfm>



The screenshot shows a web browser window with the URL <http://dpw.lacounty.gov/rmd/lmd/zone35.cfm>. The page header includes the Los Angeles County logo and the Department of Public Works logo with the website address dpw.lacounty.gov. A navigation menu contains links for Residents, Businesses, Galleries, Online Services, NewsWorks, About Us, and Contact Us, along with a search bar. The main content area is titled "Los Angeles County Landscape Maintenance Districts" and features a sidebar with a "Landscape Maintenance Districts" menu. The menu items are: LLA District No. 1, LLA District No. 2, LLA District No. 4, Engineer Reports, FAQs, and Contact Us. The main content area is titled "Zone 35 Montebello" and contains a photograph of a park area with a large tree and a winding path. Below the photo is a "NEWS UPDATE" section with the following text: "The Department of Public Works is removing dead trees within the medians in Zone 35. These trees are being removed for public safety between October 5, 2015 and October 30, 2015. A community meeting to discuss new landscaping options will be conducted by the Department of Public Works. Residents are invited to join in an open discussion about the future of median landscaping in the zone." The update also includes the following details: Date: Thursday, October 29, 2015; Time: 6 p.m.; Place: Saybrook Park; Address: 6250 Northside Drive East Los Angeles, CA 90022.

Los Angeles County
Landscape Maintenance Districts

Zone 35 Montebello



****NEWS UPDATE****
The Department of Public Works is removing dead trees within the medians in Zone 35. These trees are being removed for public safety between October 5, 2015 and October 30, 2015. A community meeting to discuss new landscaping options will be conducted by the Department of Public Works. Residents are invited to join in an open discussion about the future of median landscaping in the zone.

Date: Thursday, October 29, 2015
Time: 6 p.m.
Place: Saybrook Park
Address: 6250 Northside Drive East Los Angeles, CA 90022

Q&A